



Scheda tecnica indumento/Garment technical data sheet. 8825NB.00


Identificazione articolo/Item identification					
Cod. comm.le Industrial Starter/ IS commercial item code:	8825NB	Cod. art. fornitore/ Supplier item code*:	8825NB	Cod. fornitore/ Supplier code:	101472
Cod. colore Industrial Starter/ Industrial Starter colour code:	040 (blu marino – nero / blue navy – black)	<input checked="" type="checkbox"/> [X]	Articolo del catalogo/Item from catalogue		
	078 (grigio chiaro - nero/light grey – black)	<input type="checkbox"/> []	Articolo personalizzato/Customized item		
Nome articolo/Item name:	Polo "EXTREME" / "EXTREME" Polo Shirt				

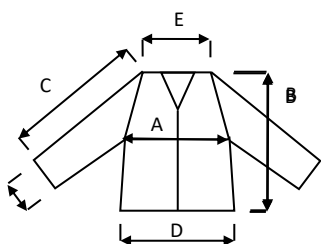
Descrizione tecnica dell'articolo/Technical item description			
	Composizione/ Fabric composition	Colore/colour (Pantone)	Peso del tessuto/ Fabric weight [g/m ²]
Tessuto principale/ Shell main fabric:	95% cotone 5% elastann / 95% cotton 5% elastan	Blu marino & Nero / Grigio chiaro & Nero	190 +/- 5%
Accessori/Accessories:	Inserti in cordura (spalle), taschino frontale / (shoulder) cordura inserts, chest pocket		
Loghi e ricami/ Logos & embroideries:			
Taglie/Sizes:	S, M, L, XL, XXL, XXXL		
Imballo/Packages:	n. 1 pz per paper box – n. 20 paper box per cartone / n. 1 piece per paper box - n. 20 paper boxes per export carton		
Istruzioni lavaggio/Care label:			

Conformità alle norme CE/Conformity with EC standards		
Cat. DPI/ PPE Category:	I	Norme CE e livelli di protezione/ EC standards and protection levels:
		EN ISO 13688:2013 (Rif . Certificate no: 21CR00188 by RITEX *) *Accredia Lab n. 0315 L
Lingue nota Informativa/ Manufacturer's notes languages:	IT,ES,CZ,PL,EN,PT,SK,HU,FR,DE,LT,RS,GR,SI,LV,HR,EE,TR,RO	

Scheda tecnica indumento/Garment technical data sheet. 8825NB.00

Taglia/Size:	Misure delle taglie/ Size measurements [cm]					
	S	M	L	XL	XXL	XXXL
A. Torace/Chest:	102	106	110	114	118	122
B. Lunghezza tot./Back lenght:	69	71	73	75	77	79
C. Manica/Sleeve:	17,5	19	20,5	22	23,5	25
D. Fondo/Bottom:	98	102	106	110	114	118
E. Spalla /Shoulder:	43,5	45	46,5	48	49,5	51

Disegno e foto/Drawing and photo



Vicenza, 10/03/2022



Resp. acquisti/Purchasing manager